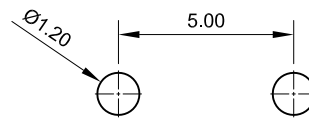
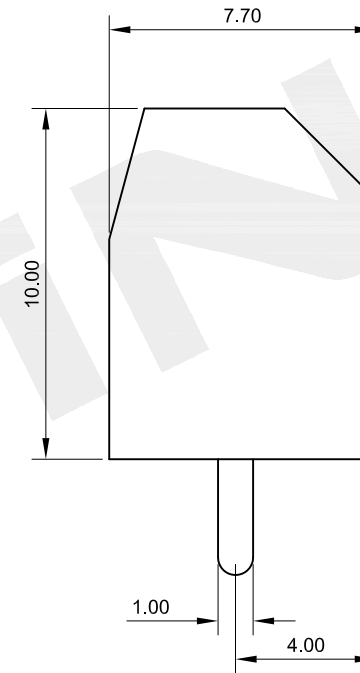
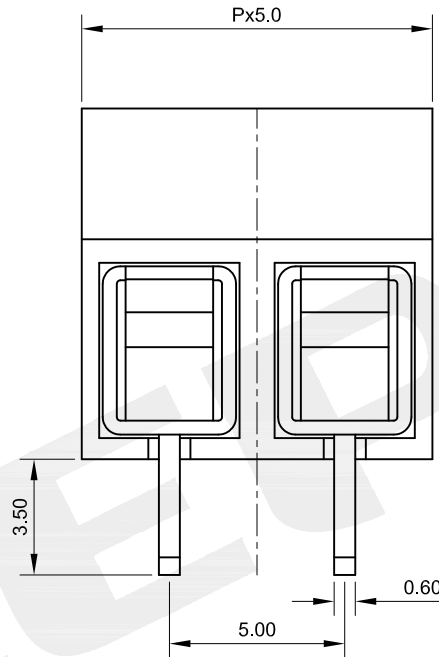
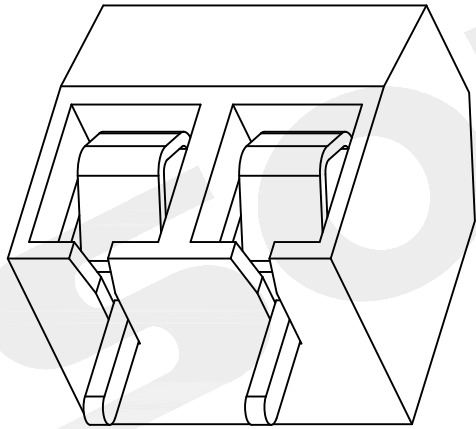


NOTES:
 INSULATOR MATERIAL:PA66,UL94V-0
 CONTACT MATERIAL:BRASS
 CURRENT RATING:10A
 VOLTAGE RATING:250V
 DIELECTRIC WITHSTAND VOLTAGE:AC 2000V,1MINUTE
 INSULATION RESISTANCE:DC 500V 500MΩ
 WIRE SIZE:AWG #24-#16
 OPERATION TEMPERATURE:-33℃ TO +105℃

PART NO:
 1033-A XX X XX 01

02:2PIN
 03:3PIN
 04:4PIN
 N/A
 SN:TIN



PCB LAYOUT

					OPERATION	DRAW	Loong	20181218	SCALE	FIT	SOLEPIN 东莞市硕品电子有限公司		
					X.X ±0.40	DESIGN	Jensen	20181218	UNIT	mm	DONGGUAN SOLEPIN ELECTRONICS CO., LTD.		
					X.XX ±0.25				SIZE	A4	PART NO.	1033-AXXXXX01	
					X.XXX ±0.15				CHECK	Jack	20181218	SHEET	1/1
A/1	20181218	NEW	Loong	Andy	Angle ±3°	APPROVE	Andy	20181218	PROJ.		DWG.No.		
REV	DATE	MODIFICATION DESCRIPTION	CHANGE	APPROVE	DIM TOL								

Specializing in the production of connectors and wiring harness products.
 HTTP://WWW.SOLEPIN.COM E-MAIL:SALES@SOLEPIN.COM TEL:0769-83003805 FAX:0769-83003036