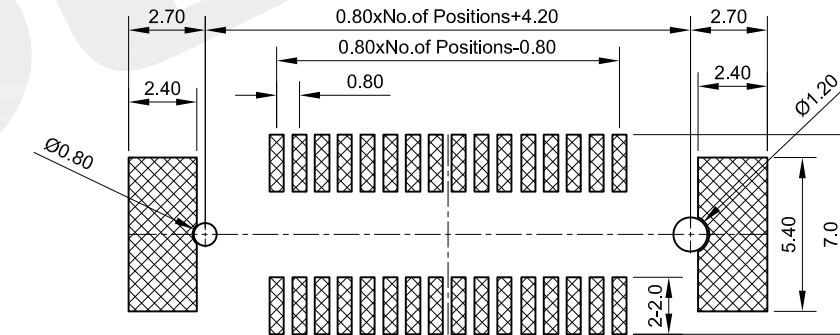
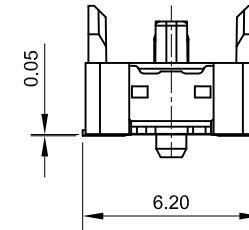
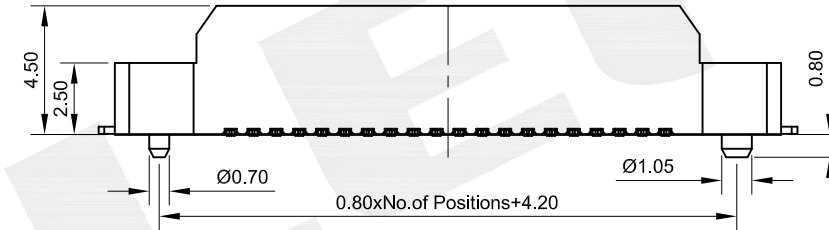
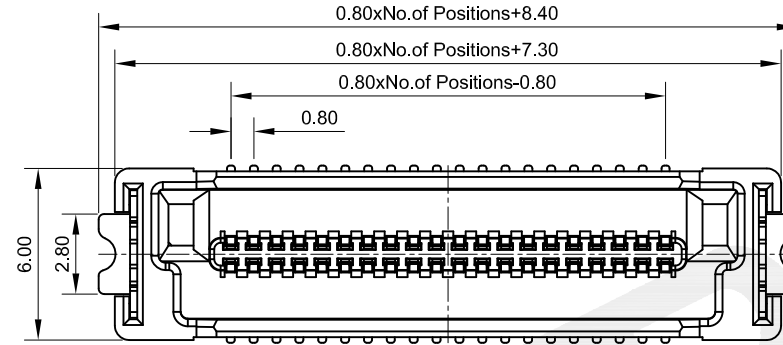


NOTES:
 INSULATOR MATERIAL:LCP UL94V-0
 CONTACT MATERIAL:PHOSPHOR BRONZE
 CURRENT RATING:1.5A
 CONTACT RESISTANCE:60mΩ MAX
 WITHSTAND VOLTAGE:500V AC/DC
 INSULATION RESISTANCE:100MΩ MIN
 OPERATION TEMPERATURE:-40℃ TO +105℃

PART NO:6632-M XX XX X 01

No.of pins ———— 4:LCP
 20:2*10PIN
 30:2*15PIN
 40:2*20PIN
 50:2*25PIN
 60:2*30PIN
 80:2*40PIN

G0=Gold Flash
 G1=1u" Gold
 G3=5u" Gold
 G5=10u" Gold
 S0=Gold Flash/Tin
 S1=1u" Gold/Tin
 S3=5u" Gold/Tin
 S5=10u" Gold/Tin
 SN:TIN



PCB LAYOUT

					OPERATION	DRAW	Loong	20181108	SCALE	FIT	SOLEPIN 东莞市硕品电子有限公司	
					X.X ±0.40	DESIGN	Jensen	20181108	UNIT	mm	DONGGUAN SOLEPIN ELECTRONICS CO., LTD. Specializing in the production of connectors and wiring harness products. HTTP://WWW.SOLEPIN.COM E-MALL:SALES@SOLEPIN.COM TEL:0769-83003805 FAX:0769-83003036	
					X.XX ±0.25				SIZE	A4	PART NO.	6632-MXXXXX01
A0	20181108	NEW	Loong	Andy	X.XXX ±0.15	CHECK	Jack	20181108	SHEET	1/1	TITLE:	0.8mm BTB Connector Male
REV	DATE	MODIFICATION DESCRIPTION	CHANGE	APPROVE	Angle ±3°	APPROVE	Andy	20181108	PROJ.	⊕	Customer No.	
					DIM TOL							