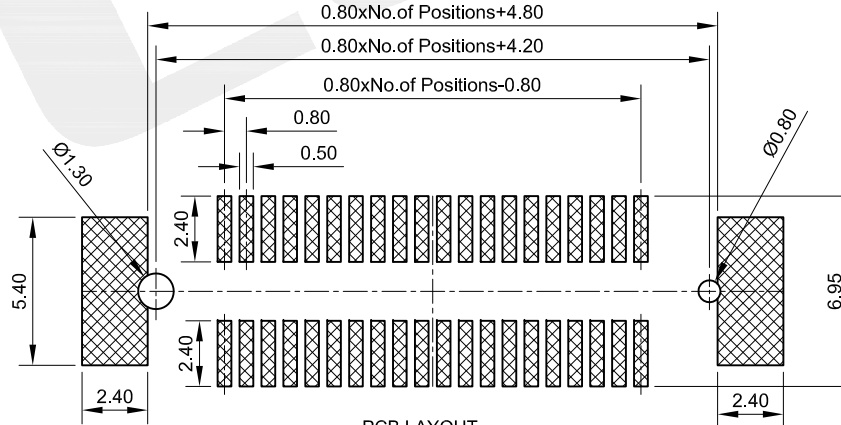
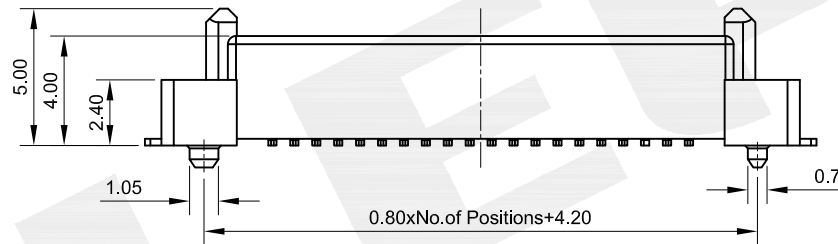
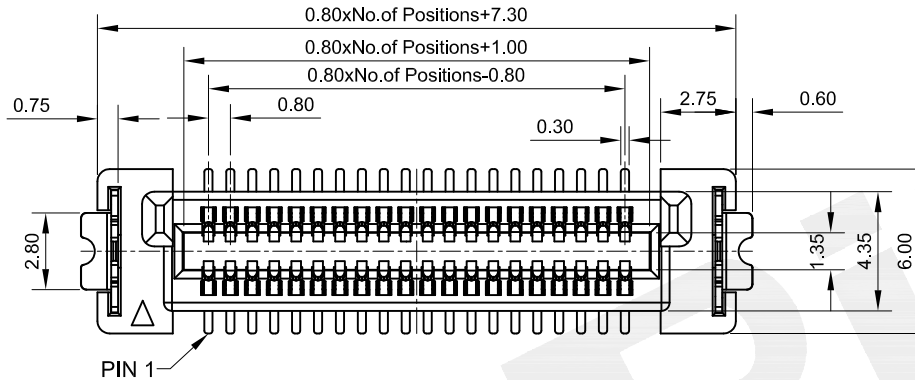
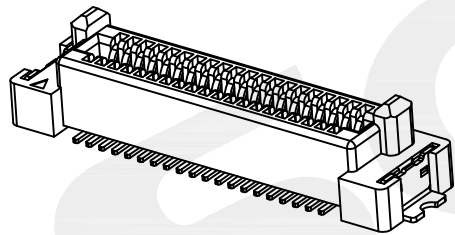


NOTES:
 INSULATOR MATERIAL:LCP UL94V-0
 CONTACT MATERIAL:PHOSPHOR BRONZE
 CURRENT RATING:1.5A
 CONTACT RESISTANCE:50MILLIOHM MAX
 INSULATION RESISTANCE:1000MΩ MIN
 DIELECTRIC WITHSTANDING:AC 500V
 OPERATION TEMPERATURE:-40 °C TO +105 °C

PART NO:6632-F XX XX X 01

NO.OF PINS _____
 _____ 4:LCP

G0=Gold Flash
 G1=1u" Gold
 G3=5u" Gold
 G5=10u" Gold
 S0=Gold Flash/Tin
 S1=1u" Gold/Tin
 S3=5u" Gold/Tin
 S5=10u" Gold/Tin
 SN:TIN



					OPERATION	DRAW	Loong	2018/11/08	SCALE	FIT	SOLEPIN 东莞市硕品电子有限公司	
					X.X ±0.40	DESIGN	Jensen	2018/11/08	UNIT	mm	DONGGUAN SOLEPIN ELECTRONICS CO., LTD.	
					X.XX ±0.25				Specializing in the production of connectors and wiring harness products.			
					X.XXX ±0.15	CHECK	Jack	2018/11/08	SIZE	A4	PART NO.	6632-FXXXXX01
A/1	2018/11/08	NEW	Loong	Andy	Angle ±3°	APPROVE	Andy	2018/11/08	SHEET	1/1	TITLE:	0.8mm BTB Connector
REV	DATE	MODIFICATION DESCRIPTION	CHANGE	APPROVE	DIM TOL				PROJ.	⊕	DWG.No.	