

# 客户图

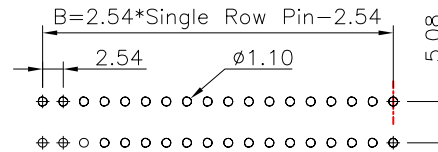
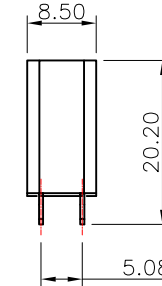
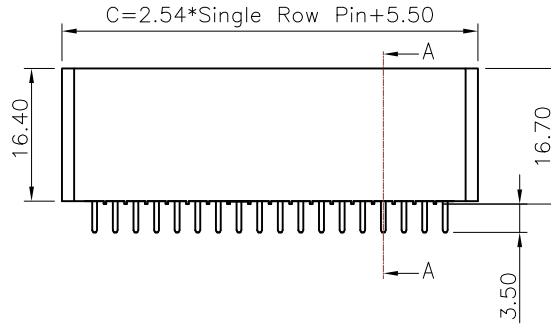
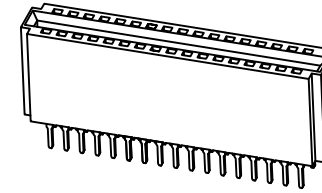
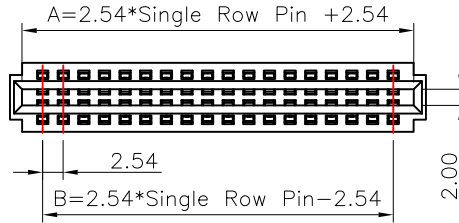
## NOTES:

1. FINISH:
  - 1.1 HOUSING: LCP BLACK,UL94V-0.
  - 1.2 CONTACT: C7025, GOLD (SEE P/N) PLATED IN CONTACT AREA, 80u" MIN MATTE TIN PLATED IN SOLDER AREA, 50u" MIN. NICKEL UNDERPLATED OVERALL.
2. ELECTRICAL:
  - 2.1 CURRENT RATING:12Amp;
  - 2.2 DIELECTRIC WITHSTANDING VOLTAGE: 750V AC/DC.
  - 2.3 CONTACT RESISTANCE: 20mΩ MAX.
  - 2.4 INSULATION RESISTANCE: 1000MΩ MIN.
  - 2.5 OPERATION TEMPERATURE:-40°C TO +105°C.
3. ALL MATERIALS MUST BE ROHS MATERIALS
4. ORDER INFORMATION:

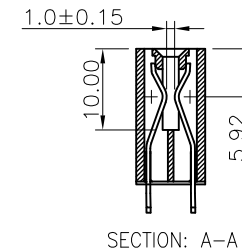
61H1- S XXX XX 164 C 03

180° 直插

Pin数码      端子电镀:      塑胶高度:      包装方式:  
 SEE TABLE    S0=Gold Flash/Tin    164=16.40mm    C=TRAY  
 006=2\*3PIN    (半金锡)  
 ~  
 100=2\*50PIN    S1=1u" Gold/Tin  
                   S2=3u" Gold/Tin  
                   S3=5u" Gold/Tin  
                   S4=10u" Gold/Tin  
                   S5=15u" Gold/Tin  
                   S6=30u" Gold/Tin



RECOMMENDED PCB LAYOUT(TOP SIDE)  
 PCB BOARD TOLFRANCF±0.05



No. OF PIN	A	B	C
026=2x13PIN	35.56	30.48	38.52
028=2x14PIN	38.10	33.02	41.06
030=2x15PIN	40.64	35.56	43.60
032=2x16PIN	43.18	38.10	46.14
034=2x17PIN	45.72	40.64	48.68
036=2x18PIN	48.26	43.18	51.22
038=2x19PIN	50.80	45.72	53.79
040=2x20PIN	53.34	48.26	56.30
042=2x21PIN	55.88	50.80	58.84
044=2x22PIN	58.42	53.34	61.38
046=2x23PIN	60.96	55.88	63.92
048=2x24PIN	63.50	58.42	66.46
050=2x25PIN	66.04	60.96	69.00
052=2x26PIN	68.58	63.50	71.54
054=2x27PIN	71.12	66.04	74.08
056=2x28PIN	73.66	68.58	76.62
058=2x29PIN	76.20	71.12	79.16
060=2x30PIN	78.74	73.66	81.70
062=2x31PIN	81.28	76.20	84.24
064=2x32PIN	83.82	78.74	86.78
066=2x33PIN	86.36	81.28	89.32
068=2x34PIN	88.90	83.82	91.86
070=2x35PIN	91.44	86.36	94.40
072=2x36PIN	93.98	88.90	96.94
074=2x37PIN	96.52	91.44	99.48
076=2x38PIN	99.06	93.98	102.02
078=2x39PIN	101.60	96.52	104.56
080=2x40PIN	104.14	99.06	107.10
082=2x41PIN	106.68	101.60	109.64
084=2x42PIN	109.22	104.14	112.18
086=2x43PIN	111.76	106.68	114.72
088=2x44PIN	114.30	109.22	117.26
090=2x45PIN	116.84	111.76	119.80
092=2x46PIN	119.38	114.30	122.34
094=2x47PIN	121.92	116.84	124.88
096=2x48PIN	124.46	119.38	127.42
098=2x49PIN	127.00	121.92	129.96
100=2x50PIN	129.54	124.46	132.50

TABLE

No. OF PIN	A	B	C
006=2x3PIN	10.16	5.08	13.12
008=2x4PIN	12.70	7.62	15.66
010=2x5PIN	15.24	10.16	18.20
012=2x6PIN	17.78	12.70	20.74
014=2x7PIN	20.32	15.24	23.28
016=2x8PIN	22.86	17.78	25.82
018=2x9PIN	25.40	20.32	28.36
020=2x10PIN	27.94	22.86	30.90
022=2x11PIN	30.48	25.40	33.44
024=2x12PIN	33.02	27.94	35.98

REV	DATE	MODIFICATION DESCRIPTION	CHANGE	APPROVE	OPERATION	DRAW	WLY	SCALE	UNIT	mm	SCALE	1:1	PROJ.	SIZE	A4	PART NO.	TITLE:	DRAW NO.
A2	2020.8.4	外露长度修改与实物一致	WLY		X.X	±0.40	Jensen	2021.02.03	DESIGN					<b>SOLEPIN 东莞市硕品电子有限公司</b> Professional connector manufacturer DONGGUAN SOLEPIN ELECTRONICS CO., LTD.				
A1	2020.7.14	旧料号: 9825-SXXXBD01 脚长3.08	Chilles		X.XX	±0.25	Jack	2021.02.03	CHECK					SIZE	A4	PART NO.	61H1-SXXXXX164C03	
AO		NEW			X.XXX	±0.15	Andy	2021.02.03	APPROVE					SHEET	1/1	TITLE:	2.54mm 金手指 DIP 180° PIN针外露3.50mm	
					Angle	±3°								PROJ.	PROJ.	DRAW NO.	SP-032	